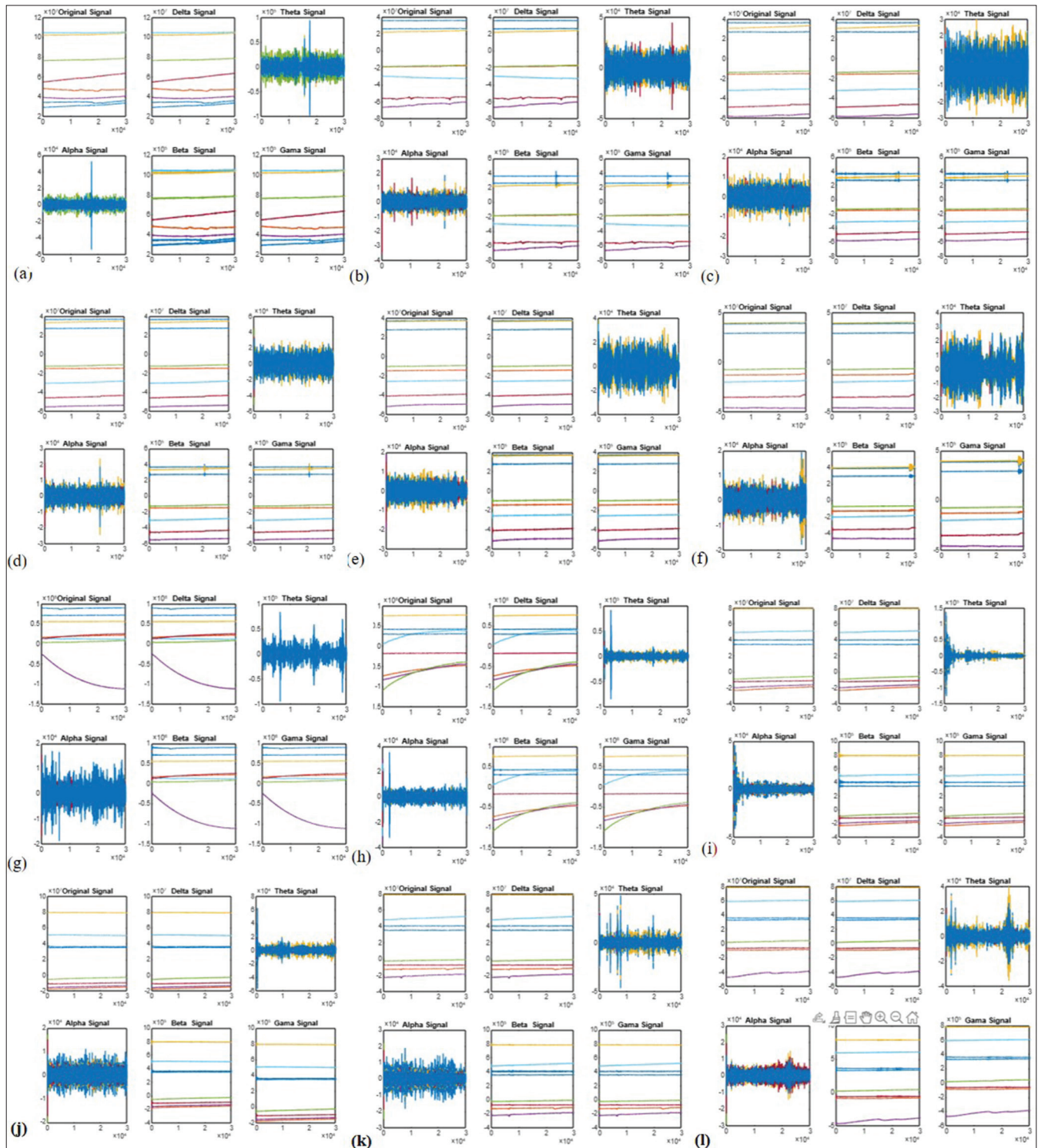


ANNEXURE

Sample participant EEG signals processed in MATLAB



Annexure Figure 1: Sample participant EEG Brain wave signal analysis of 6 different time events in MATLAB (a) Study group baseline 1 (b) Study group baseline 2 (c) Study group 4th min (breathworks) (d) Study group 5th minute (e) Study group 7th minute (f) Study group 10th minute (g) Control group baseline 1 (h) Control group baseline 2 (i) Control group 4th minute (normal breathing) (j) Control group 5th minute (k) Control group 7th minute (l) Control group 10th minute. EEG: Electroencephalogram.