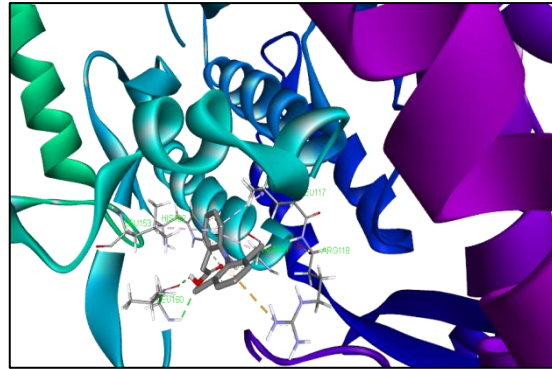
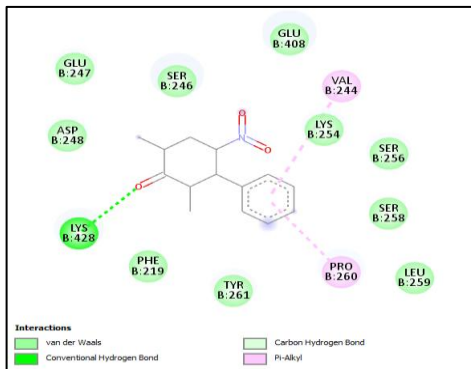


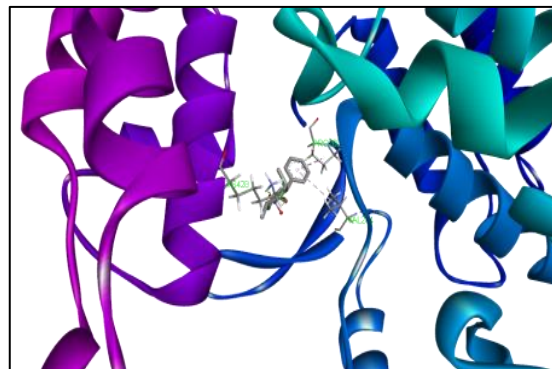
1A



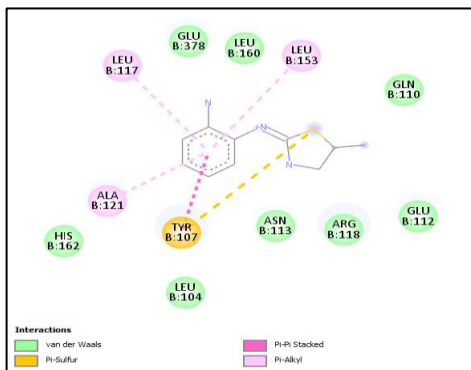
1B



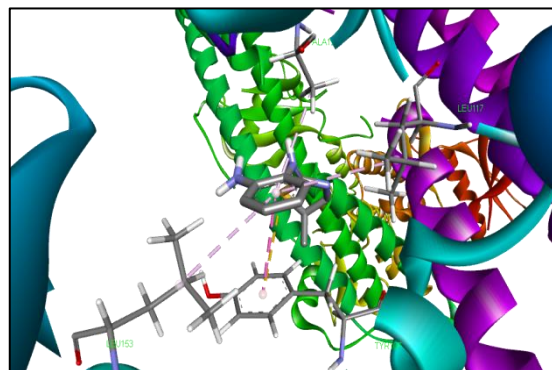
2A



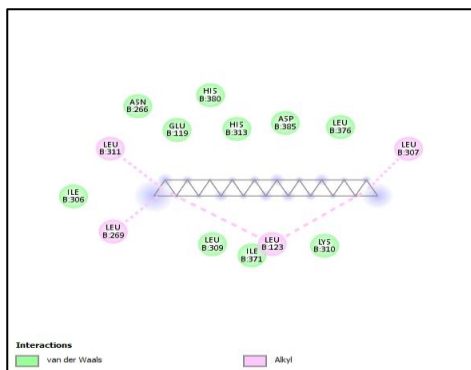
2B



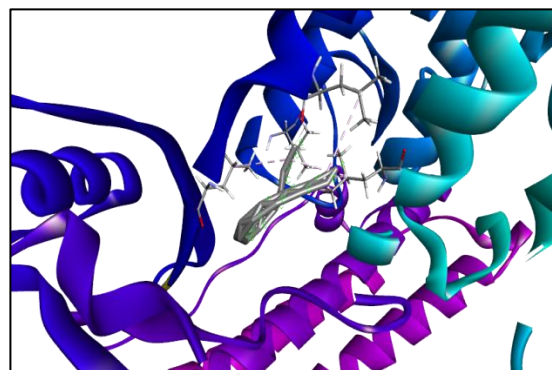
3A



3B



4A



4B



**Supplementary Figure:** Molecular docking images of the NFkB protein with 8 different ligands. 1A and B represent 2D and 3D docking images of Diclofenac sodium. 2A and B represent 2D and 3D docking images of 2,6-Dimethyl-4-nitro-3-phenyl-cyclohexanone. 3A and B represent 2D and 3D docking images of 2-(2-aminoanilino)-5-methyl-2-thiazoline. 4A and B represent 2D and 3D docking images of 10-heneicosene, 11-phenyl. 5A and B represent 2D and 3D docking images of N-benzyl-2-([5-(2-furyl)-1,3,4-oxadiazol-2-yl]sulfanyl)acetamide. 6A and B represent 2D and 3D docking images of 2-((e)-[[(e)-2-[(e)-(2-hydroxyphenyl)methylidene] amino)propyl]imino]methyl)phenol. 7A and B represent 2D and 3D docking images of 1,1'-(4-methyl-1,3-phenylene)bis[3-(5-isopropyl-1,3,4-thiadiazol-2-yl)urea]. 8A and B represent 2D and 3D docking images of 2-(3-hydroxy-1-propynyl)-2-adamantan-2-ol